

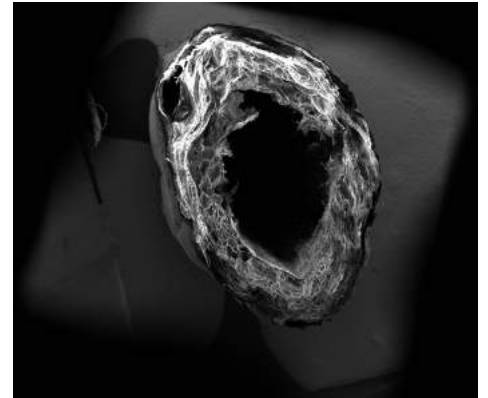
NERVE REGENERATION CONDUIT



NERVE REGENERATION CONDUIT

Decellularized, freeze-dried and sterile allogeneic artery and vein from umbilical cord for NERVE REGENERATION

Innovative Tissue Engineering



NerVFIX®



CONDUIT & WRAPPING

- ❖ **Living donor origin:** artery and vein from umbilical cord exclusively removed during childbirth following strict safety rules
- ❖ **Safety process:** mechanical and chemical treatments to guarantee decellularization, inactivation of potential viruses, bacteria and fungi. Deep cleaning, freeze-drying and gamma sterilization
- ❖ **Easy to use and convenient:** freeze-drying for room temperature storage. Easy cutting. Ready to use. 2 main indications: gap conduit & wrapping. 1 unique range
- ❖ **For nerve regeneration:** peripheral nerve repair with vessel conduit for hand and foot surgery. Ingrowth of regenerating axons into newly formed bands of proliferating Schwann cells in the conduit with orientation of axonal cells

TBF
TISSUE ENGINEERING

INFORMATION NOTICE

NerVFIX® Nerve regeneration conduit



NerVFIX®

❖ **Allogeneic conduit**

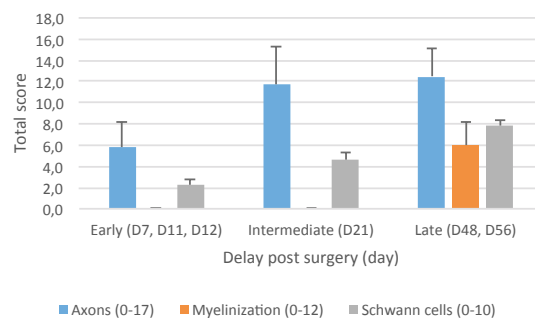
❖ **Safety process**

Innovative Tissue Engineering from TBF Research and Development France

CHARACTERISTICS

Safety process: NerVFIX® conduit is decellularized, viro-inactivated, freeze-dried and gamma sterilized.

Efficiency: NerVFIX® is biocompatible and resorbable within 8 to 12 weeks. Its tubular structure made of physiologic collagen, elastin, laminin and hyaluronic acid gives total nerve reconstruction as Schwann cells multiplication, axons regrowth and myelinization (*Graph 1*).



Graph 1: Nerve reconstruction after 56 days. NerVFIX® use on rat model after connection of a 1 cm sciatic nerve gap

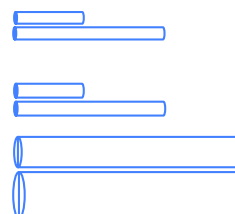
INDICATIONS

For hand and foot peripheral nerve repair: digital, ulnar, medial, radial nerves...

PREPARATION AND REFERENCES

Check the integrity of the packaging and the expiry date. Please refer to the Surgical Technique Guide. NerVFIX® can be easily cut. It is ready to use as wrapping or tubular conduit without being rehydrated.

Inner diameter	Length	Reference
2 mm	10 mm	NA01 artery
	20 mm	NA02 artery
3 mm	10 mm	NA31 artery
	20 mm	NA32 artery
5 mm	30 mm	NV53 vein
7 mm	30 mm	NV73 vein



USING

USING CONDITIONS

NerVFIX® conduit has a human origin, therefore:

- ❖ The surgeon must inform the patient before surgery
- ❖ The graft implant form must be duly completed with the surgeon's and the grafted patient's names and returned to your distributor after implantation

CONTRA - INDICATIONS

Situations where NerVFIX® use may be contraindicated include:

- ❖ Severe vascular or neurological diseases
- ❖ Non-stabilized diabetes



6 rue d'Italie - 69780 Mions - FRANCE
 Tel. +33 (0)4 72 68 69 09
 Fax. +33 (0)4 72 68 69 10
info@tbf-lab.com www.tbf-lab.com